



DANELLE BERGSTROM
Return

DANELLE BERGSTROM
Return

15 October - 7 November 2015



Working between Sydney and Hill End, Bergstrom creates exquisite landscapes that pictorialise and physicalise the artist's inner self. Seeded in experience, memory and imagination, 'Return' represents the artist's ongoing processes of reflection on the land around her enclave in Hill End. This regional setting is an infinitely fertile fount of inspiration for Bergstrom, embodying intensely personal formative experiences tied to her years living in Hill End with her family. A place of celebration, sorrow and serenity, it is like a revenant shadow that has become part of Bergstrom's very being, informing her paintings with subconscious persistence.

'You are where your heart is' says Bergstrom, who paints the land via mnemonic references and imaginative conjurings rather than literally en plain air. Meditative and transformative, the works symptomise a quiet surrender to the heart – not in an indulgent or sentimental way, but as an honest and raw acceptance of self. A layering of ghostly greys and bluey lilacs entwined with earthy umbers and sandy browns creates a poignant vision of the landscape that lingers between representation and abstraction. With no defined perspectival focus to pull us in and anchor our gaze, the painterly scenes invoke a broader emotional and psychological exploration of environment.

Interested in the existential union between her psyche and the landscape of Hill End, Bergstrom pitches her paintings on ideas surrounding the ancient symbol of the Ouroboros – a serpent eating its own tail. Representing cyclicity, self-reflexivity and the philosophical notion of the 'eternal return', the Ouroboros encapsulates the artist's continual return to and rekindling of the past in order to move forward through the present. In this way the works function as revised narratives – tangible footprints along well-trodden roads that wind through the artist's memory. For Bergstrom, this eternal march is never the same as she carries with her new experiences and evolving perspectives.

Rewind I
oil on linen
61 x 61 cm



Rewind II
oil on linen
61 x 61 cm



Rewind III
oil on linen
61 x 61 cm



Rekindle
oil on linen
61 x 61 cm



Imprint
oil on linen
61 x 61 cm



Forever
oil on linen
92 x 198 cm



Chinese whispers I
oil on linen
92 x 198 cm



Chinese whispers II
oil on linen
92 x 198 cm



Morning song I
oil on linen
92 x 244 cm



Morning song II
oil on linen
92 x 244 cm



Return I
oil on linen
92 x 274 cm



Return II
oil on linen
92 x 274 cm



Return III
oil on linen
92 x 274 cm



Silver I
oil on linen
107 x 214 cm



Silver II
oil on linen
107 x 214 cm



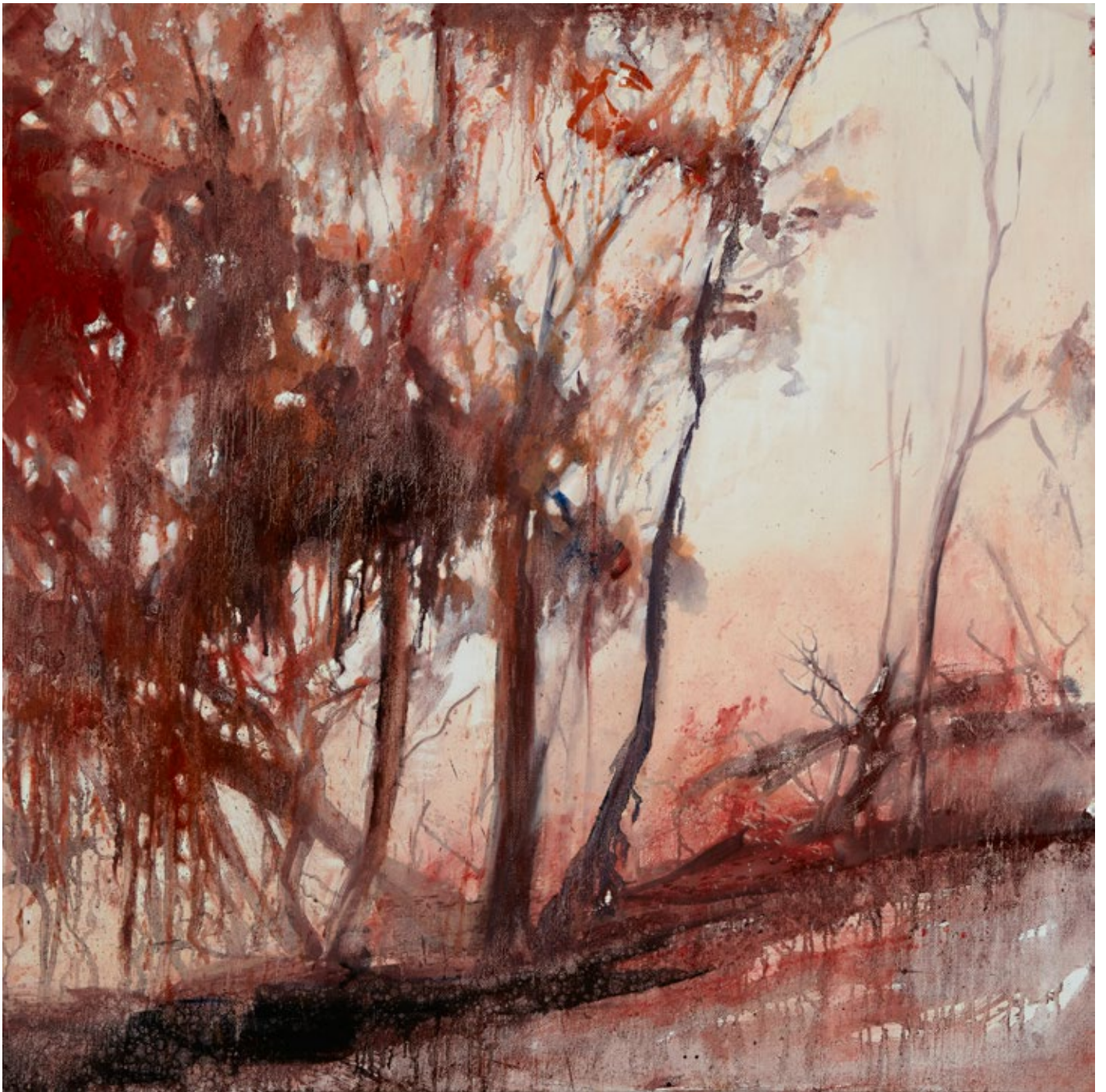
Silver III
oil on linen
107 x 214 cm



Shannan's Gully II + III
oil on linen
153 x 92 cm (left panel)
153 x 183 cm (right panel)



Burning heart I
oil on linen
92 x 92 cm



Burning heart II
oil on linen
92 x 92 cm



Burning heart III
oil on linen
92 x 92 cm

