

danelle bergstrom

## symphony

---

Like a symphony in four parts, the essential elements of nature – earth, water, air, fire – must interconnect to attain harmony. It is in the balance and communication within those parts, and the associative properties of stability, emotion, thought and passion, that concord is attained.

In 2008, I spent six months in the Northern Territory working on a commission, and during that time I had the opportunity to travel around some of the outer regions of Darwin to explore the diversity of that unique landscape. At times, what I was observing appeared incongruous with all my other senses. I had to close my eyes to see the landscape. The apparent stillness in my view contrasted with the buzzing of insects, cries from distant birdlife, sweet perfumed warm moist air surrounding me as the heat of the rising sun touched my skin.

These works, produced from that experience, are sensory memories developed from paintings and sketches while there. They are subjective and personal, yet aim to spark a larger conversation about the ability of nature to act as a universal language, a shared song.

---



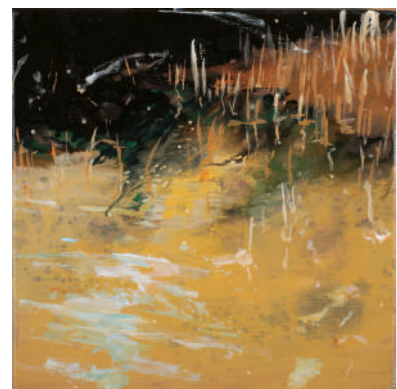
*Symphony* (2010) 122 x 366 cm oil on linen



*Water Candles* (2010) 91 x 244 cm oil on linen



*Water Candles II* (2010) 91 x 244 cm oil on linen



*Wish I - IV* (2010) 30.5 x 30.5 cm oil on linen



*Consequence* (2010) 91 x 183 cm oil on linen



*Keeper of the Flame* (2010) 91 x 152 cm oil on linen



*Rebirth* (2010) 79 x 213 cm oil on linen



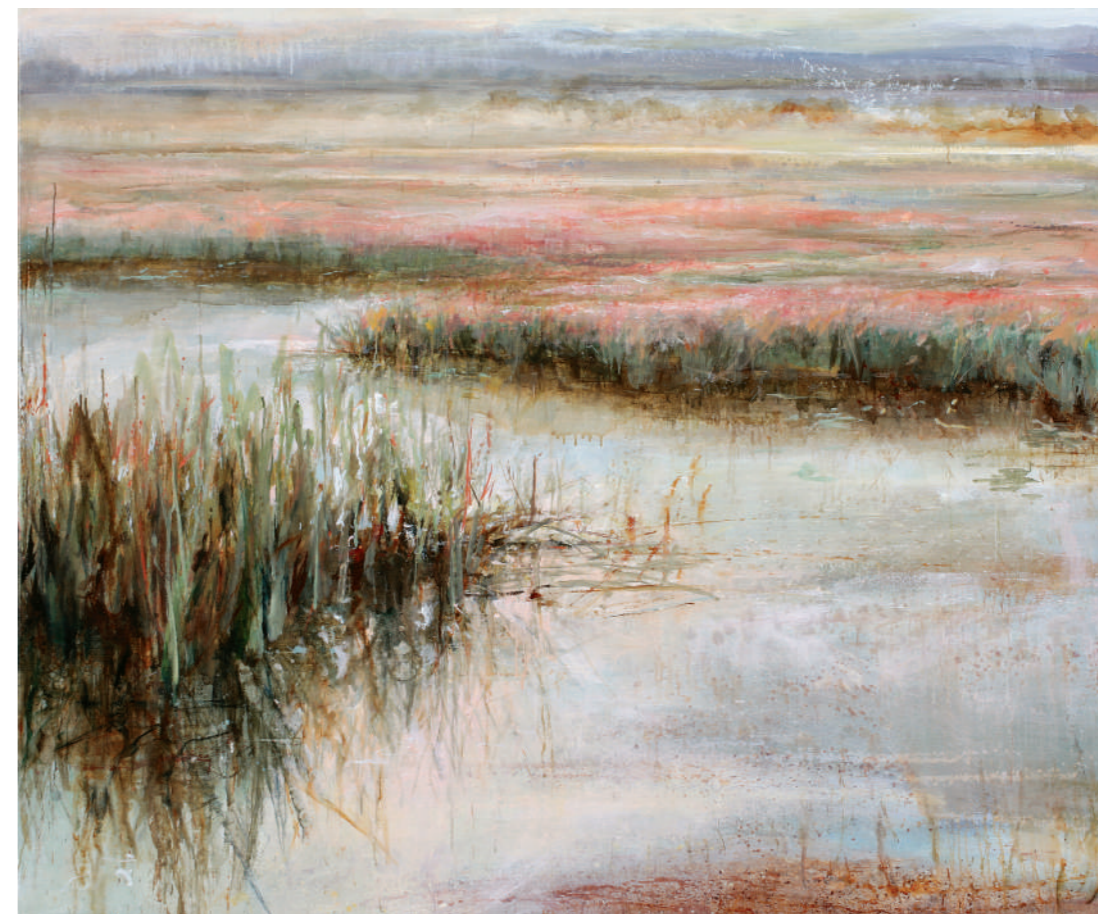
*Solace* (2010) 46 x 46 cm oil on linen



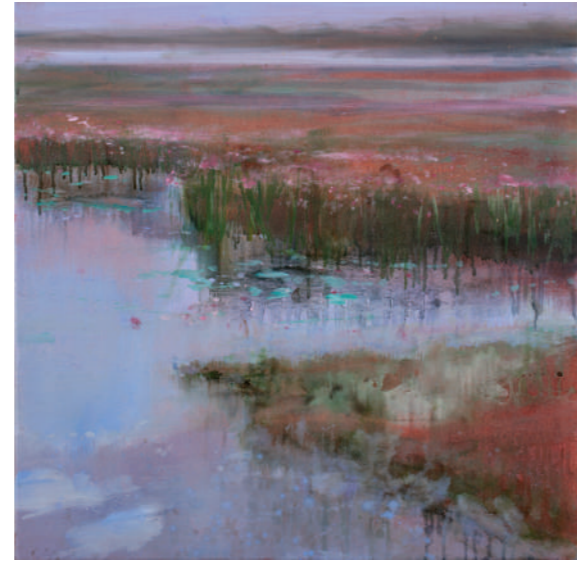
*Heartfelt* (2010) 152 x 183 cm oil on linen



*Dawning* (2010) 152 x 183 cm oil on linen



*Dawning II* (2010) 152 x 183 cm oil on linen



*Unfolding I, II & III* (2010) 61 x 61 cm oil on linen



*Unfolding IV, V & VI* (2010) 61 x 61 cm oil on linen





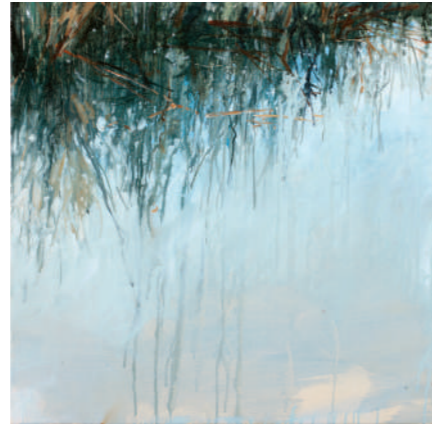
*Fire in the Sky I, II & III* (2010) 71 x 30.5 cm oil on linen



*Echoes of a Distant Land* (2010) 46 x 91 cm oil on linen



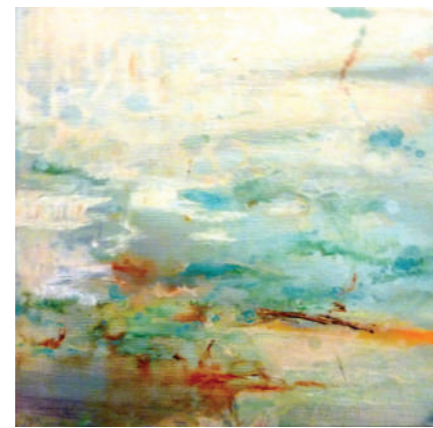
*Echoes of a Distant Land II* (2010) 46 x 91 cm oil on linen



*Water Spirit I, II & III* (2010) 20 x 20 cm oil on linen



*Day Spring* (2010) 61 x 61 cm oil on linen



*Watersong I, II & III* (2010) 20 x 20 cm oil on canvas

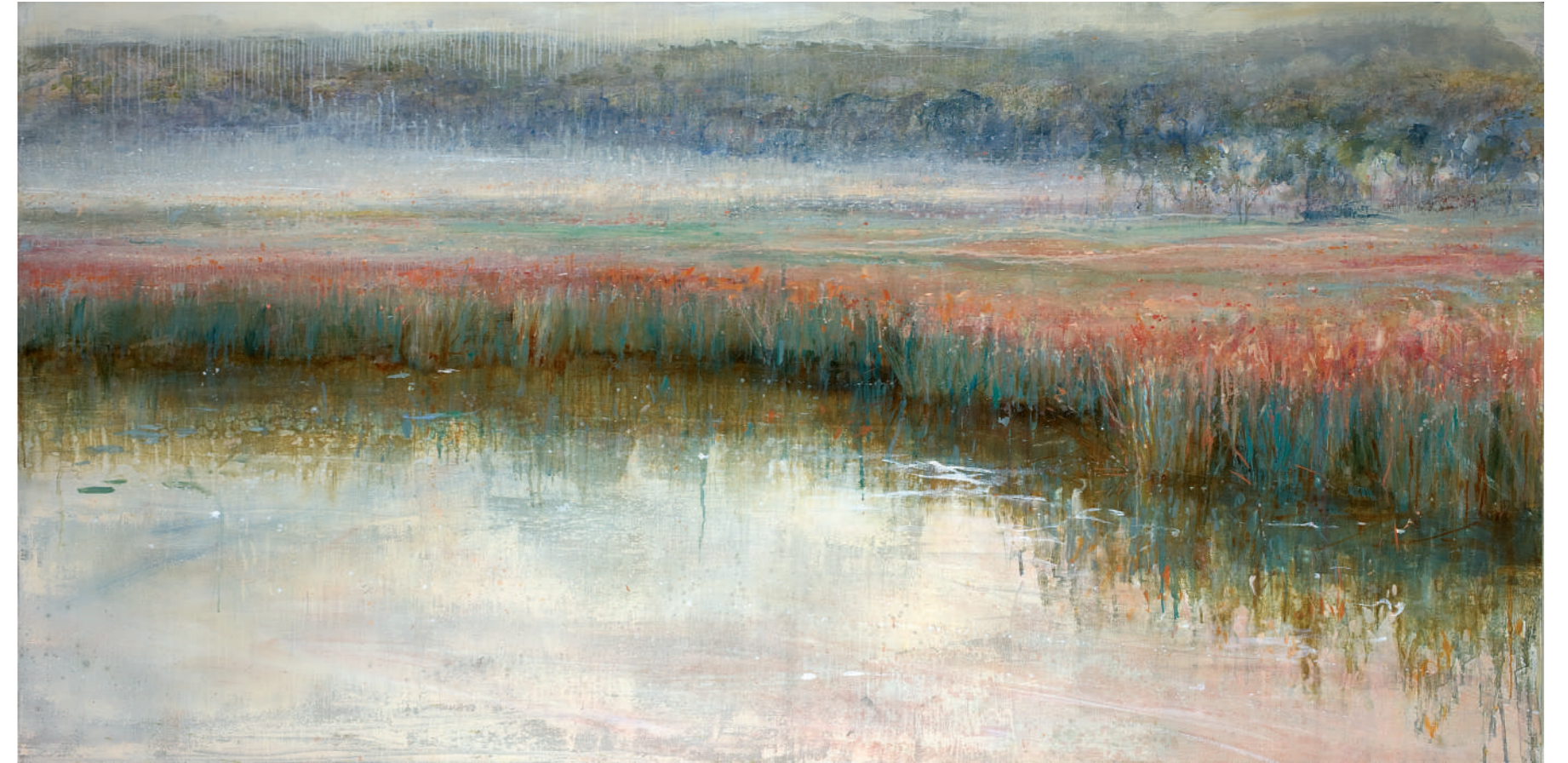


*Dreaming I, II & III* gouache on paper 79 x 28 cm

*It's been over two years since I spent six months in the Northern Territory working on a commission and exploring the surrounding landscape. The intense emotional veracity of the last series of works, *Symphony*, has given way to a subtler interpretation of the same sense memories.*

*Ten is a continuation of that conversation, through the lens of time. The works are fantastical reimaginings of past experience, more heavily steeped in meditation and in the internal return of heart and mind to a previous sanctuary.*

---



*Returning* (2011) 107 x 214 cm oil on linen



*Deception I* (2011) 152 x 183 cm oil on linen



*Deception II* (2011) 152 x 183 cm oil on linen



*Deception III* (2011) 152 x 183 cm oil on linen



*Chimera* (2011) 152 x 183 cm oil on linen



*Resonance* (2011) 152 x 183 cm oil on linen



*Lure* (2011) 152 x 183 cm oil on linen



*Butterfly Effect* (2011) 122 x 122 cm oil on linen



*Waking* (2011) 122 x 122 cm oil on linen





*Promise* (2011) 122 x 122 cm oil on linen

Danelle Bergstrom is represented by Arthouse Gallery

---

**ARTHOUSEGALLERY**

66 McLachlan Avenue, Rushcutters Bay NSW 2011

02 93321019 | [contact@arthousegallery.com.au](mailto:contact@arthousegallery.com.au)

[www.arthousegallery.com.au](http://www.arthousegallery.com.au)